

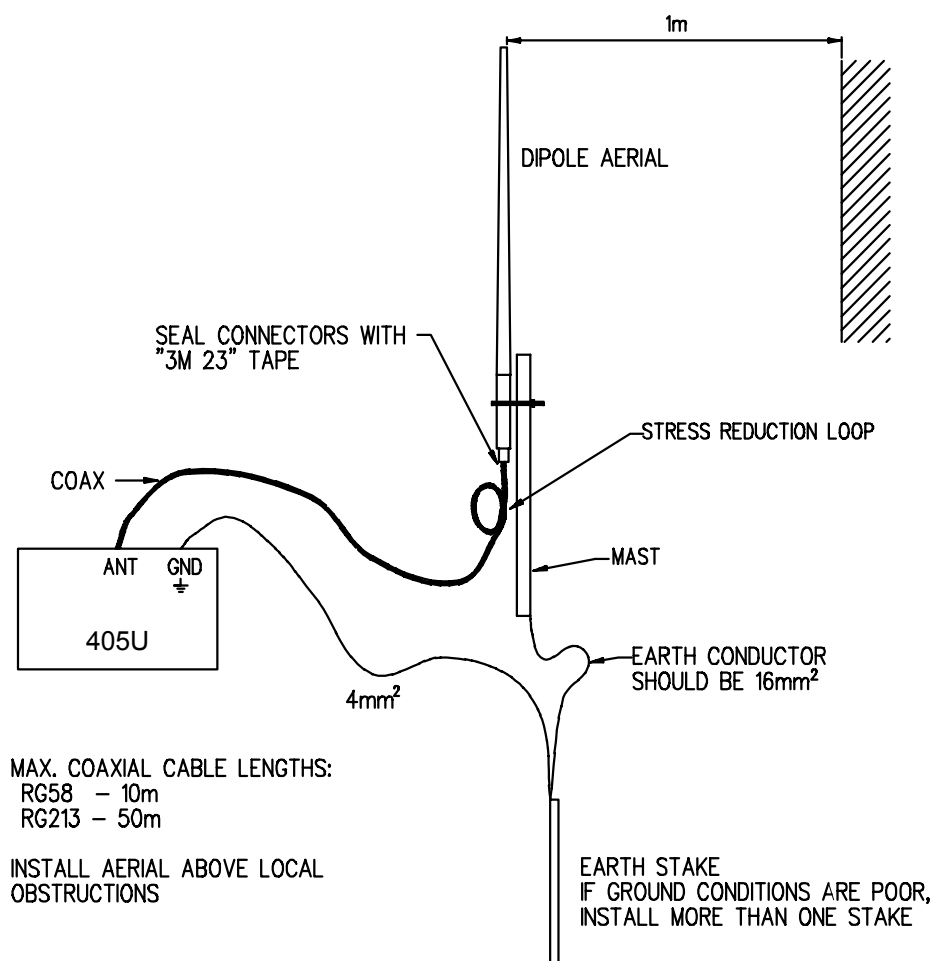
405U

Installation Guide

Statutory Requirements - EC

Unlicensed operation limits the radio power. High gain aerials may only be used to compensate for cable losses.

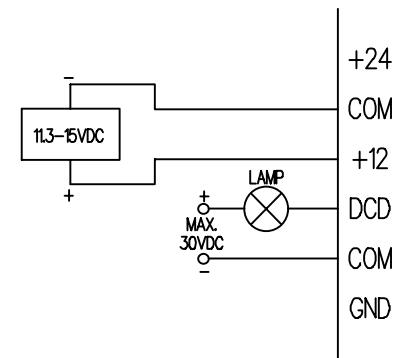
Aerial Installation



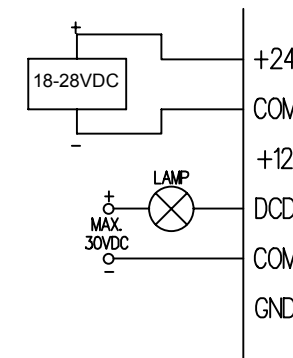
405U Wiring

Power supply may be: (A) 11.3-15VDC;
or (B) 18-28VDC;
or (C) Backup battery with mains charger
Choose option and wire as shown

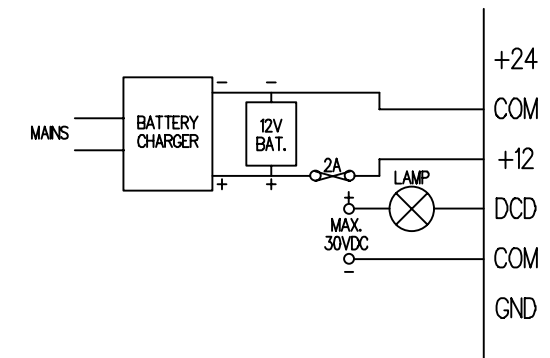
(A)



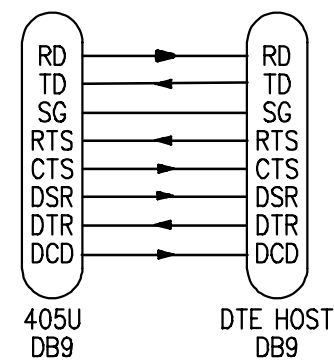
or (B)



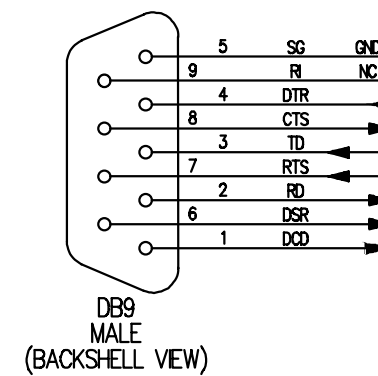
or (C)



Example RS232 Cable
405U (DCE) to PC (DTE)
Cable may vary for other devices
(eg PLCs, Dataloggers)



405U RS232 DCE
Cable Interface



RS485 Connection

