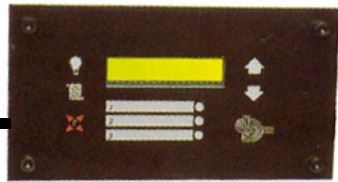
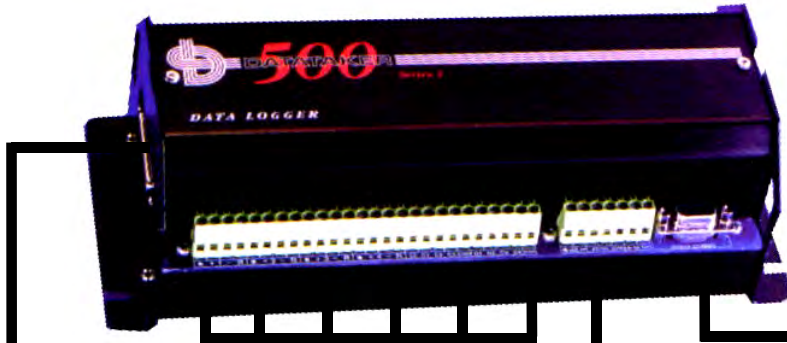


# Omni Monitor Condition Monitoring / Data Acquisition System

## Dataker Data Logger / Acquisition module

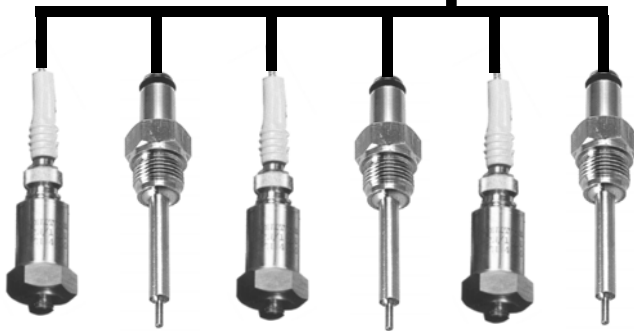
Logs data and generates alarms independent of the PC.

Internal non volatile memory holds the last 330,000 readings.



## Panel Mount Display

Displays real time values, alarm conditions, logger status etc.



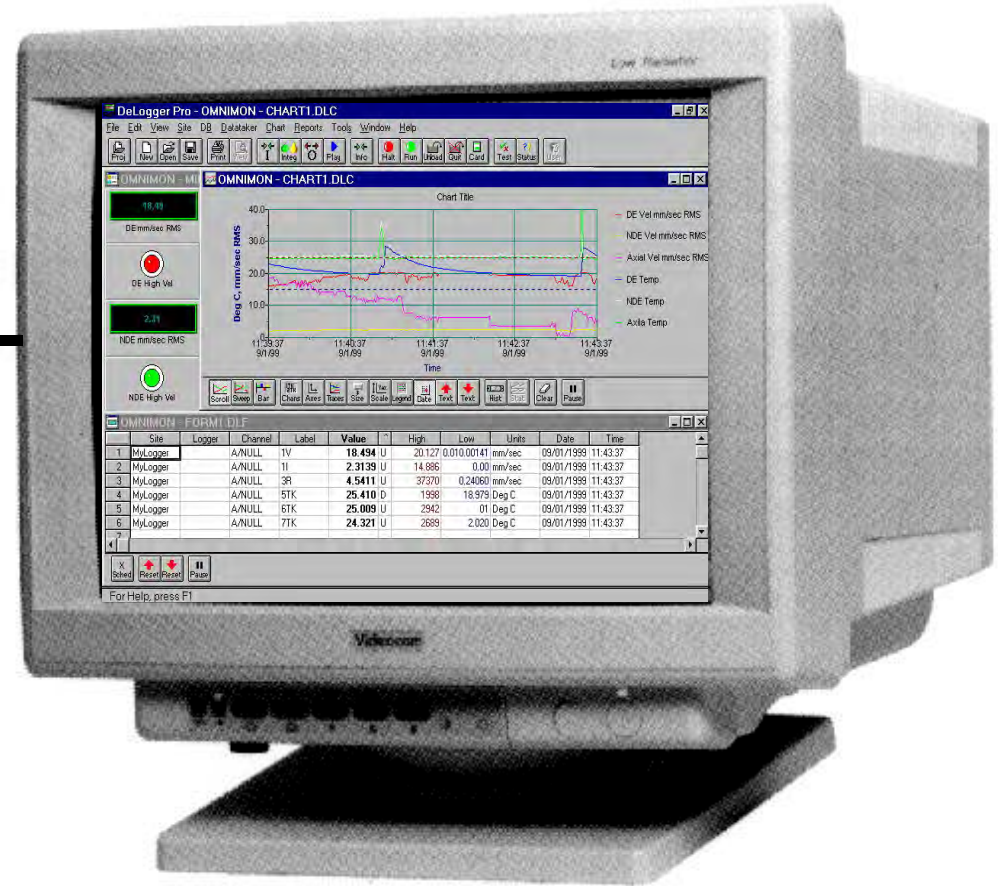
Accelerometers & Temperature Probes  
or other sensors for pressure, flow, level etc.

## RS232/485 Serial Link

Data can be accessed real time or historically via a direct serial link. Access is also possible via a modem for remote diagnostics.

## Digital Alarm O/P's

Alarms can be set to activate audio or visual warnings, shut down machinery and automatically download data to PC.



## Online PC Display

Real time or historical data can be viewed in various formats and transferred to other programs such as Microsoft Excel and Access.