

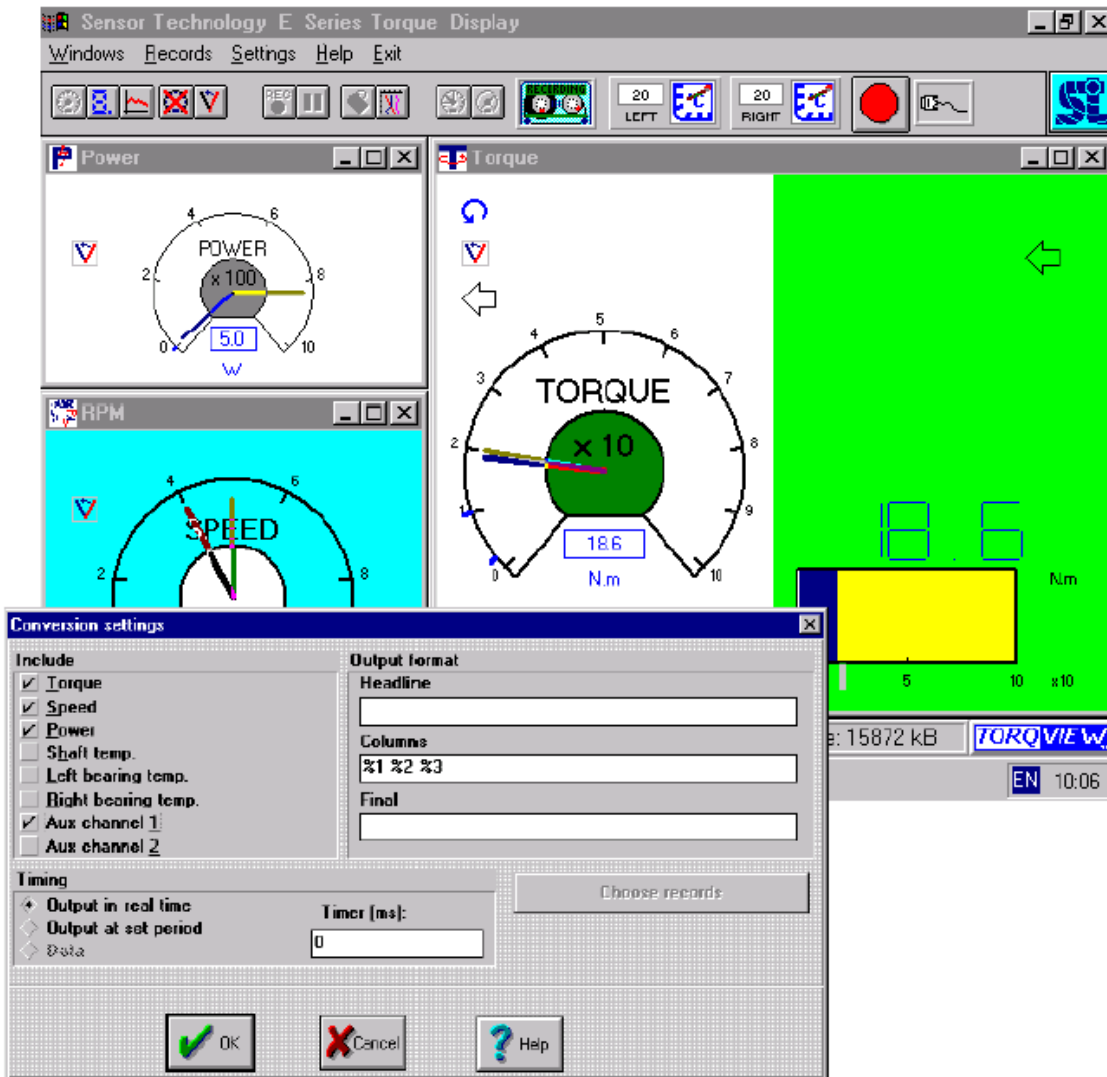
TORQVIEW™ Virtual Instrumentation Display PC Interface Software



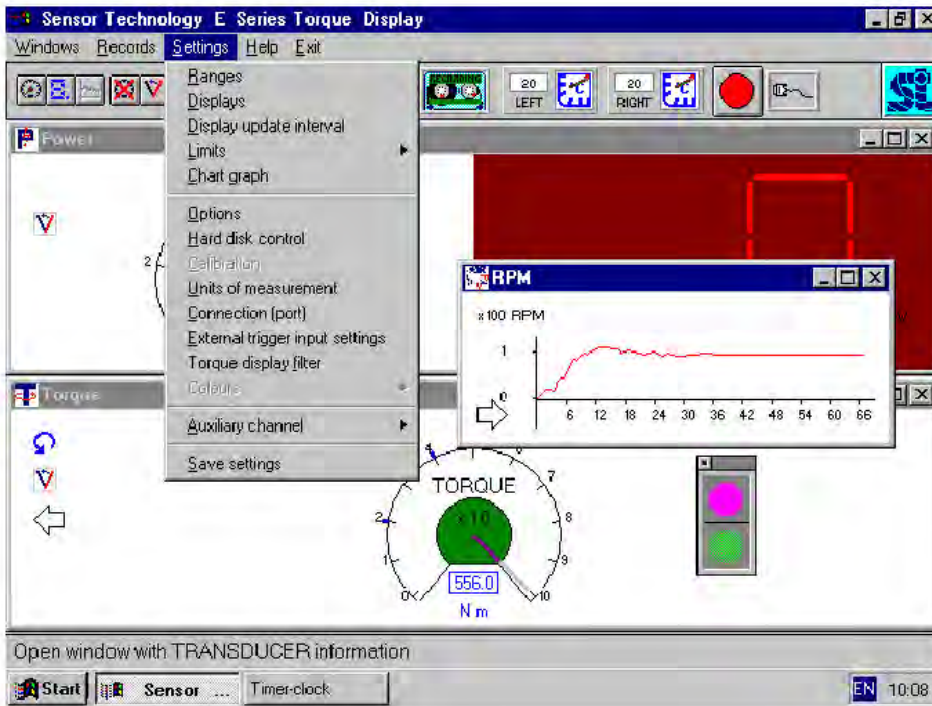
TORQVIEW™ virtual instrumentation display software operates in conjunction with the E-series readout and torque transducers to provide a flexible display and data recording facility which has the following features:

- Simple installation using serial port
- Ease of operation (user friendly, a variety of user interface settings such as colours, units, etc.)
- 4 types of display: analog, digital, graph and chart graph in any mix
- Wide choice of displayed units (SI, imperial, metric systems)
- Displays torque, RPM, power, bearing temperatures, shaft temperature and 2 auxiliary analog inputs as required
- Limits can be set for external shutdown
- Data recording facility (manual or automatic)
- Various output data options (Matlab, Excel ...)

Interfaces with strain gauge, optical and Rayleigh wave transducers



TORQVIEW™ Virtual Instrumentation Display PC Interface Software



Computer hardware requirements:

TORQVIEW™ needs a minimum of a 486 PC with VGA graphics (IBM-PC compatible) running MS Windows 3.1 or later (95, 98 and NT included).

It requires at least 2MB free hard disk space for program files and additional space for data.

Ordering Information

TORQVIEW™ is available as an option for the following E-series instruments:

E102 – Advanced Strain Gauge Interface Module (TSE 2096R data sheet)

E202 – Advanced Optical Torque Transducer Module (TSE 2098R data sheet)

E302 Advanced Transducer Torque Display (TSE 2103R data sheet)

For ordering information see the relevant data sheets or contact us at the details below.

