

Static/Reaction Square Drive Mounting TORQUE SENSOR DTD-S Series

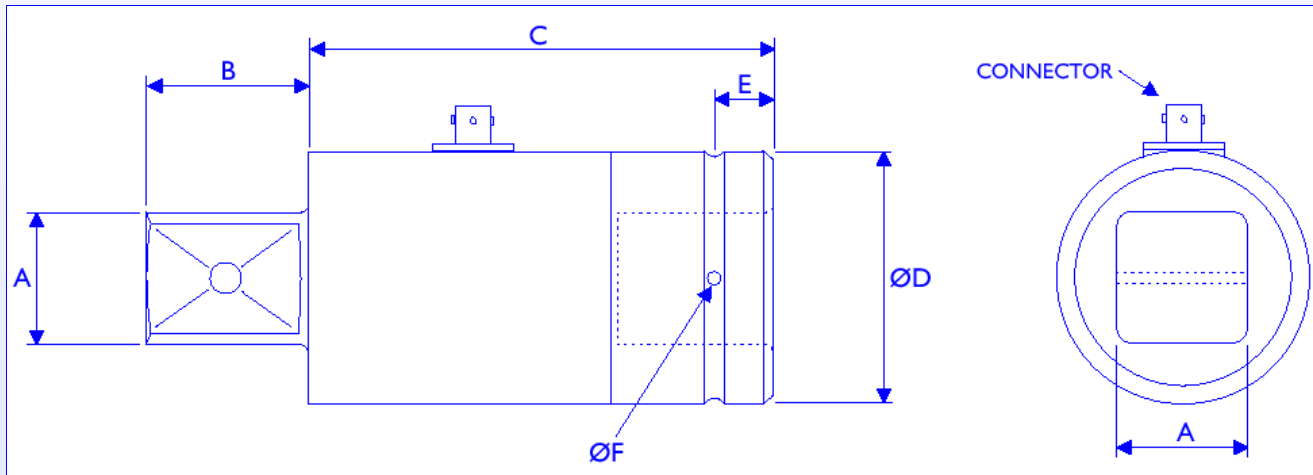
Issue - Sept 2003

DESCRIPTION

The DTD-S series of Static/Reaction Torque Sensors have been designed specifically for the measurement of direct torque, and is particularly suited for use in calibrating or testing Torque Tools in a QA environment. All ranges are constructed from stainless steel and are environmentally protected to IP65.

The sensor is provided with an integral, robust bayonet lock military connector for quick and easy connection purposes.

Other styles and ranges are available and can be designed specifically to meet a particular applications requirement (please consult our Applications Department).



RANGE (Nm)	A	B	C	ØD	E	ØF	Square Drive
10	6.3	7.5	48	25	N/A	N/A	0.250 inch
20	6.3	7.5	48	25	N/A	N/A	0.250 inch
50	10	11.5	48	35	N/A	N/A	0.375 inch
100	12.5	15.5	58	35	7.9	5.6	0.500 inch
500	19	23	58	54	10.2	6	0.750 inch
1000	25	28	79	54	15	6.5	1.000 inch
5000	25	28	79	54	15	8	1.000 inch
10,000	38	29	122	100	16	9	1.500 inch
20,000	38	29	158	120	16	10	1.500 inch
50,000	63.5	55	175	120	38.1	12	2.500 inch
			200				

CHARACTERISTICS	DTD-S	UNITS
Range:	10, 20, 50, 100, 500, 1000, 5000, 10000, 20000, 50000	Nm
Excitation Voltage:	10 (15 Max.)	VDC or VAC
Sensitivity:	1.0	mV/V
Overload Protection:	150	±%FSO
Non-Linearity:	<0.25	±%FSO
Repeatability:	<0.15	±%FSO
Hysteresis:	<0.25	%FSO
Temperature Range Operating:	-20 to +80	°C
Compensated:	+20 to +70	°C
Temperature Effects On Zero:	<0.010	±%FSO/°C
On Output:	<0.010	±Reading/°C
Bridge Resistance:	700 nominal	ohms
Drive Size:	See Dimension Table Above	
Environmental Protection:	IP65	