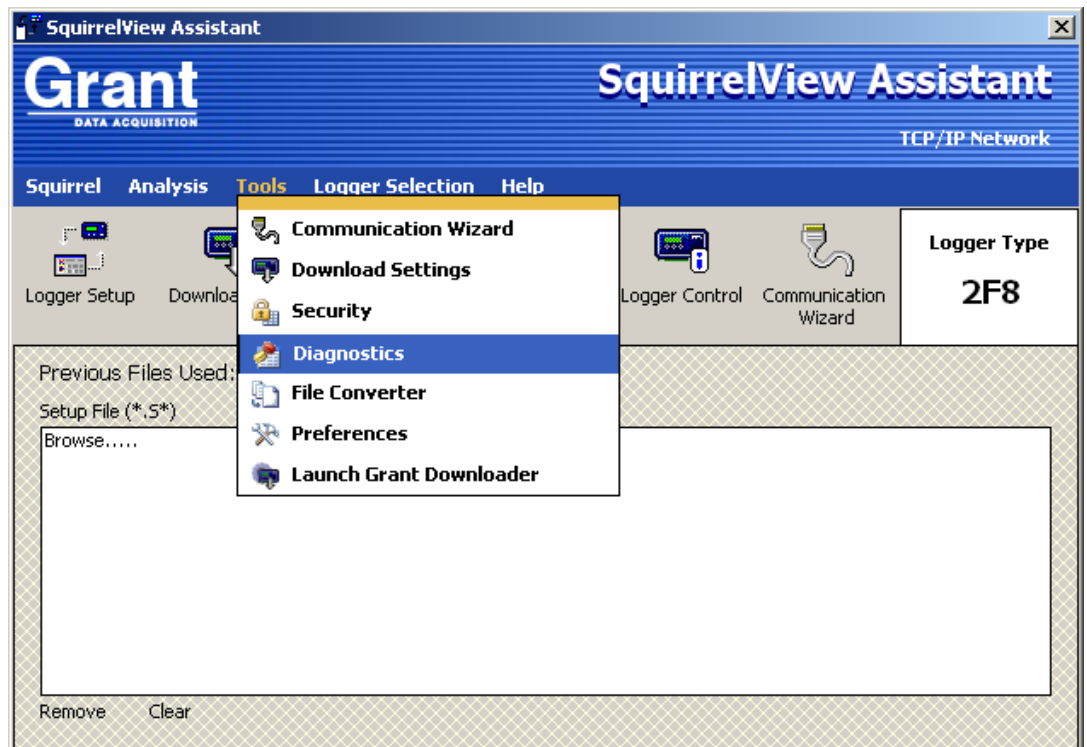


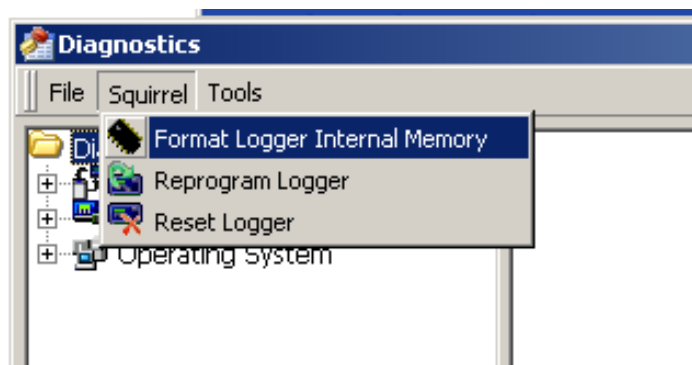
## Increase Internal Memory size of the SQ2010/SQ2020/SQ2040 Data Loggers

**Note:** Requires version 3.5 of SquirrelView software and version 4.5 firmware (Controller and Acquisition) in the Data Logger. These versions can be found at the following page. [Link](#)

With the Data Logger connected to the PC open up the SquirrelView software and open the Diagnostic widow by going to *Tools* and *Diagnostics*



In the Diagnostics window click on *Squirrel* and choose *Format Logger Internal Memory* from the list.



**Grant Instruments  
(Cambridge) Ltd**  
Shepreth  
Cambridgeshire  
SG8 6GB

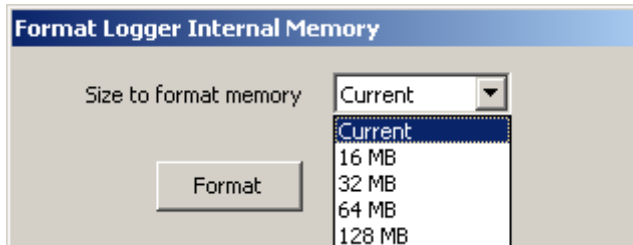
Tel: 01763 260811  
Fax: 01763 262410  
[www.grant.co.uk](http://www.grant.co.uk)

Reference No:

# DATA ACQUISITION

## Hints and Tips

The following window will appear and from the drop down list choose the memory size required.



Then click on Format and the logger memory will be reformatted to the selected size.

**Note:** this depends on the size of memory card installed in the logger – older SQ20xx could have as small as 16Mb