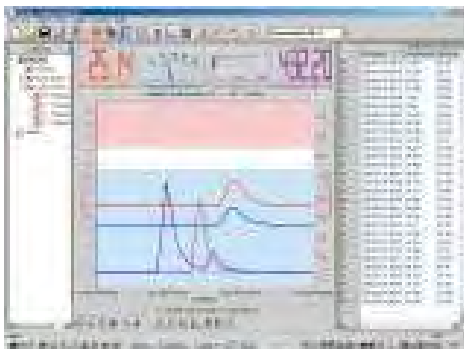


Portable Open Channel Flow Logger

This unit utilises the MiniWater6 Mini probe and DaqPRO™ portable data logger to provide a versatile and accurate portable measurement and logging device for the measurement of water flows in open channels, tanks and chambers.



The DaqPro data logger comes with powerful analyses software for logger setup, downloading of data and viewing data in graph and table format. Data may also be exported to applications such as MS Excel.

DaqPro data logger provides portable real time display in numeric and graph format. Additional sensors may be added such as temperature, humidity, PH, and other environmental parameters, along with measurement of process signals.

The MiniWater6 probe is a lightweight vane sensor suitable for water flow measurement. It is supplied with a telescopic probe. The probe can also be mounted on a long pole where measurement in deeper water is required

Specification	MiniWater6 Mini
Measuring range	0.02 - 5 m/s
Accuracy	+/- 2.0% fs plus +/- 1.5% rdg
Operating temp.	0 to +70°C
Power req. (external)	6.5 - 26 V DC
Output signal	0 - 1.0 V
Load	>10 kOhm
Head dim.	ø 22 x 28 mm
Probe length	175 mm
Cable Length	20 metres
Telescopic Probe	1.5 metres

Specification	DaqPro Datalogger
Measuring range	0-5V
Accuracy	+/- 0.5% fs
Operating temp.	0 to +70°C
Input types (8 channels)	V, mV, T/C, PT100 mA, pulse, etc
Battery Life	40 hours
Display	LCD graphical
Windows software	95/98/2000/ME/XP and NT
Memory capacity	512,000 readings
Logging rate	4Khz to 1 hour