

R-LOG GSM/GPRS Data Logger

- ◆ Data Logger with integral GSM/GPRS modem
- ◆ 2 x 0-10v, 2 x 4-20mA, 2 x PT100, 8 x digital inputs
- ◆ 2 x relay outputs for alarm and control
- ◆ Add up to 64 further inputs or outputs
- ◆ Collect data via email or web browser interface
- ◆ No telephone or Ethernet connection needed
- ◆ Use anywhere in the world with GSM/GPRS cover
- ◆ Monitor pressure, temperature, RH, flow, level, etc.
- ◆ Monitor water meters or KW hour meters remotely
- ◆ Send SMS text messages and emails on alarm
- ◆ Fully user programmable via windows software
- ◆ 16 bit resolution, opto isolated inputs
- ◆ 12-24Vdc power supply suitable for vehicle use



The R-LOG GSM/GPRS data logger combines a multi channel analogue/digital input data logger with a GSM/GPRS modem to provide an all in one instrument for data logging, remote data acquisition, alarm and control.

Real time data can be viewed, and logged data downloaded via the GSM network by direct dial up or via GPRS to a web page or emailed directly to your inbox.

Alarm levels can also be set for any of the analogue or digital inputs, triggering SMS alarm messages and emails. The 2 digital outputs can also be controlled via SMS text messages or from a web browser. The unit can also email data at regular intervals to up to 15 email recipients as a CSV attachment.

R-LOG comes with an easy to use configuration SW for setting up input parameters for both analogue and digital inputs, including scaling engineering units and setting alarm levels or states. The configuration can be done on a PC and downloaded either locally using RS-232 cable or from a distant location through the GSM cellular network.

R-LOG can be connected to either sensors and relays through its I/O or to a PLC through its RS-232 port using MODBUS or any other required protocol. Using DigiRail expansion modules a further 64 analogue or digital I/O can be added to the system. This makes the R-Log a very flexible solution for a wide range remote data acquisition solutions.

Data Communication system



R-Log can communicate by GSM, GPRS, email and SMS text message.

Serial devices may also be connected to it such as PLC's, GPS receivers, weather stations etc.

R-Log can email it's data straight to your email inbox as a CSV file.

28.02.2007 (3).csv									
	A	B	C	D	E	G	P	Q	R
1	Created by Remmon remote monitoring								
2	From	RLOG_ORANGE							
3	Type	TimeLog							
4	SentON	28.02.2007	20:02						
5	FileName	28.02.2007.csv							
6	A1	A2	A3	A4	A5	Volt	Time	Date	F_ADDR
7	23.4	159.3	0	2439	81.5	11.979	14:59:00	28.02.07	8BB63A
8	23.5	159.5	0	2437	81.4	11.979	15:00:10	28.02.07	8BB65C
9	22.9	157	0	2442	81.1	11.979	15:01:10	28.02.07	8BB67E
10	23.1	158.5	0	2445	81.3	11.979	15:02:10	28.02.07	8BB6A0
11	24.1	159	0	2448	81.5	11.979	15:03:10	28.02.07	8BB6C2



UK / Europe / Office
 Tel: +44 (0)8700 434040
 Fax: +44 (0)8700 434045
 info@omniinstruments.co.uk
 East Kingsway Business Centre,
 Mid Craigie RD, Dundee, Scotland UK.

USA / Canada Office
 Tel +1-866-849-3441
 Fax +1-866-628-8055
 info@omniinstruments.net
 PO Box 84 Arroyo Grande
 California, 93420

Australia / Asia Pacific Office
 Tel +61 (0)282 442 363
 Fax +61 (0)294 751 278
 info@omniinstruments.com.au
 18 Welcome Street
 Parkes NSW 2870

R-LOG GSM/GPRS Data Logger

R-LOG Specifications:

HW interfaces

RS-232	one DB9 male
Digital Inputs	8 (5-24VDC)
Analog Inputs	2 Current (0-20mA) 2 Voltage (0-10v) 2 Resistance (PT-100)
Digital Outputs	2 (relay 5A)
Memory Capacity	1.8MB

Protocols

PLC Protocols	MODBUS, Matusushita, Unitronics, Allen Bradley and others
---------------	---

Physical Characteristics

Dimension	10.6 x 6.3 x 9cm
Weight	240gr

Cellular Network Interfaces

Technology	GSM - 850/1900MHz EGSM - 900/1800 MHz
Protocols	CSD, SMS< GPRS
Internal modem	Sony Ericsson GR47

Electrical Characters

Voltage	12 - 24VDC
Current consumption @ 12v	
Continues	120mA
Peak	200mA

Environment

Operating Temperature	-25°C to 55°C
Storage Temperature	-40°C to 85°C
Operating Humidity	5% to 95%
	<i>Non - condensing</i>

R-Log Expansion Units



DigiRail –Expansion Modules Utilising these low cost expansion modules a further 64 inputs or outputs can be added to the R-Log.

DigiRail 2A provides 2 analogue inputs programmable for thermocouples, K,T,J,E,N,R,S,B, PT100 sensors, 4-20mA, 0-20mA, 0-5v, 0-10v, -10—20mV, 0-20mV, 0-50mV.

DigiRail 4C provides 4 counter or digital inputs

DigiRail 2R provides 2 relay outputs

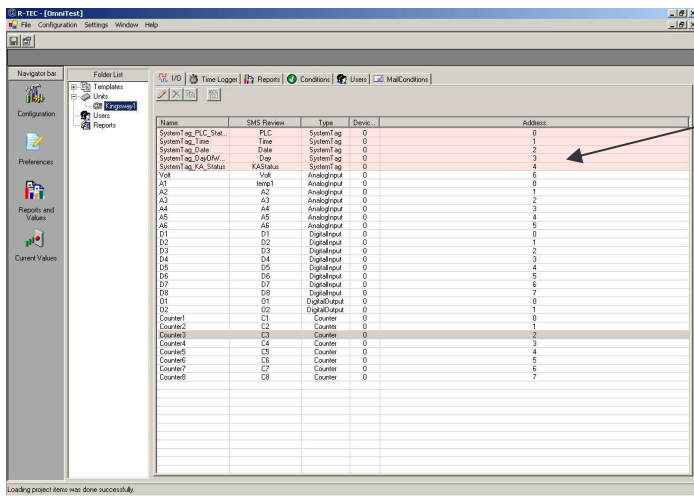


Vaisala Weather Transmitter WXT510 solid state all in one weather sensor combines the six most essential weather parameters in one instrument: wind speed and direction, liquid precipitation, barometric pressure, temperature and relative humidity. The WXT510 provides accurate and stable measurement in a small, robust package, requiring very little maintenance. When connected to the R-Log the WXT5210 provides a fully functional remote weather station. Omni Instruments can supply a complete package with mast and solar panels for long term deployment.

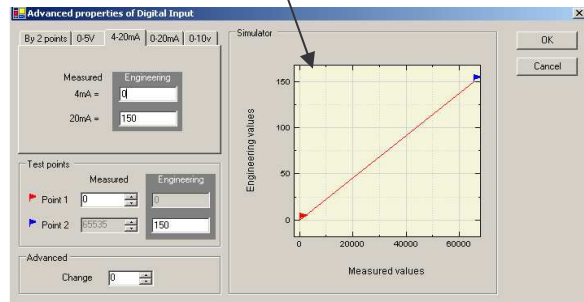


Garmin GPS Receiver integrates with the R-Log to provide full GPS position data in addition to the analogue and digital inputs on the R-Log. Ideal for vehicle monitoring where current GPS position need to be logged along side other parameters such as temperature, RH, pressure, fuel consumption, power, tank level etc. Real time data can be viewed via GSM connection or web browser or emailed at regular intervals.

R-LOG GSM/GPRS Data Logger

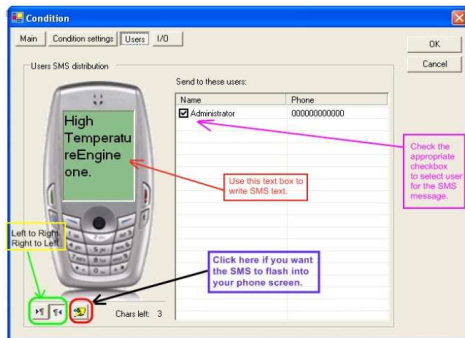


The R-Log is simple to set up using the windows software interface provided. Each analogue and digital input can be assigned a label. Analogue inputs can be scaled for engineering units.

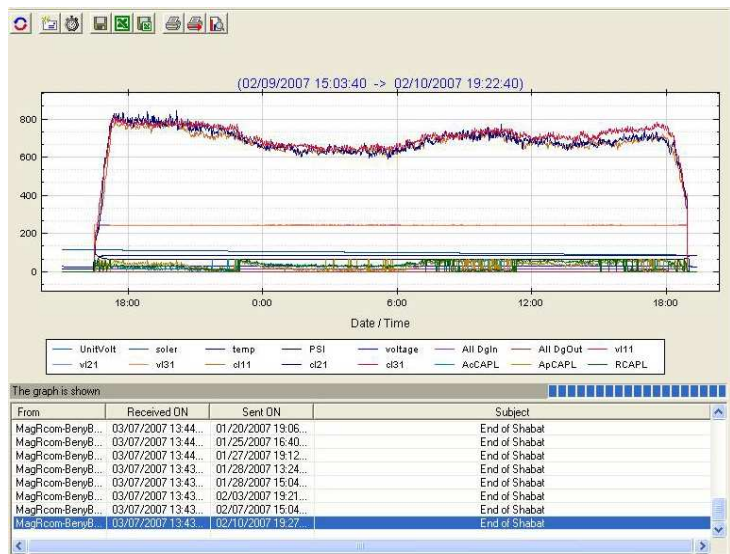


Up to 15 users can be set to receive SMS text messages and email messages (data files or alarms).

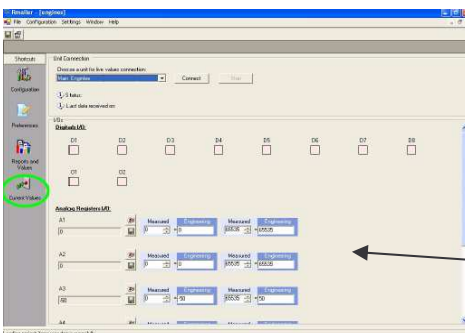
Priority	Name	Phone	Mail address
0	Jim Furness	07802915020	jim@omniinstruments.co.uk
1	John Rob	0784839129	john@omniinstruments.co.uk
2	Fred Wall	0385930200	fred@calderrefrig.com
0	Maintenance Engineer	02838429090	maint@frigservices.net



Configure exactly how you would like to see the SMS text messages on your mobile phone



The R-Log can email data in CSV format to up to 15 email recipients The R-Tec software provided will also store all your incoming email data files and display them in graph format—with an export to XLS function.



Real time values can be viewed at any time via the GSM network