

Remote Weather Station RWS02

- Log up to 24 channels
- Rugged weatherproof case
- Huge range of sensors available
- Fast sample rates
- GSM and radio communication option
- Export data to Excel, Word etc.



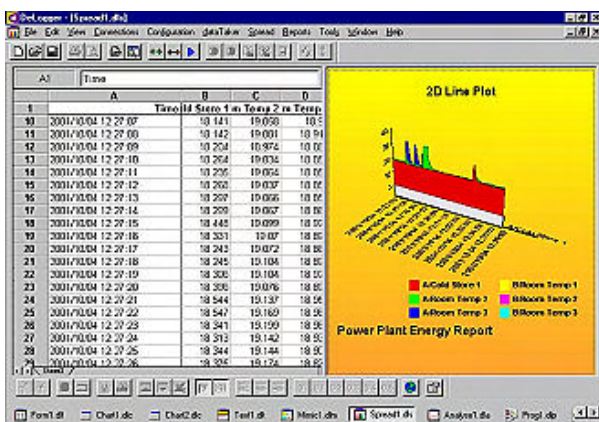
DT800 Data Logger

Specification

Inputs	Up to 24 analogue, 8 digital
Sensors	Barometric Pressure, Temperature, Humidity, Wind Speed & Direction, Rainfall, Solar Radiation, Wave Height, Tide Height
Memory Capacity	130K expandable with flash memory
Logging Modes	Single point or average, peak,
Logging Rate	Programmable - 50 Hz to 24 hours
Data Retention	Over 200 years with no power
Operating Range	-40 to +60 degrees C
Power Supply	12 - 28 v DC
Data Format	Graphic and CSV (export to Excel etc.)
Communications	RS232, GSM or radio modem
Network	Ethernet TCP/IP supported
Mast	4 metre st. st. mast with rigging kit
Housing	Steel, weatherproof, IP66, lockable



Remote Weather Station RWS02



Powerful windows software for data analysis

Remote Weather Station RWS02

Sensors Available

Temperature	PT100 - range -50 to +150 deg C accuracy 0.1 deg C
Humidity	O - 100% relative humidity, accuracy +/-1.5%
Barometric Pressure	Range 600 - 1200 mBar, accuracy 0.1 %
Wind Direction	Wind direction 0 - 359 degrees, linearity 1%
Wind Speed	Wind speed 0 - 210 K/Hour, accuracy 0.3 M/S
Rainfall	Tipping bucket rain gauge, resolution 0.01 "
Solar Radiation	SP Lite Pyranometer for global solar radiation sensor
Water / Sea Level	Submersible depth sensor, accuracy 0.1%
Wave Height	Submersible depth sensor, accuracy 0.1%



Schiltknecht
Anemometer
Wind Vane

Remote Communications (optional)

GSM Modem	900 / 1800 MGHZ, dual band, data SIM required
Radio Modem	868 MGHZ, range up to 5 kilometers



Kipp & Zonen
SP Lite Solar
Radiation
Sensor



No more site visits !

Data from the weather station can be collected remotely using either licence free radio modem link or using a GSM modem

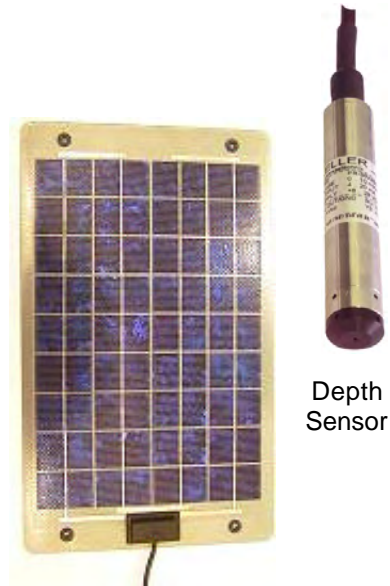
Elpro 805 Radio Modem

868 MGHZ low power radio modem (range up to 5 kilometers), baud rate up to 76K with transparent RS232 communications



Wavecom WMOD2 GSM Modem

900/1800 MGHZ dual band GSM modem, data transfer rate 9600 baud. Collect data worldwide using the GSM network.



Depth
Sensor

Solar Panel
(for self powered
systems)

Options:

Other sensors, GPS real time clock update, solid state wind sensor, ABS or stainless steel enclosure for harsh environments, 6 metre mast, solar panel or wind generators for long term field use where power is not available.